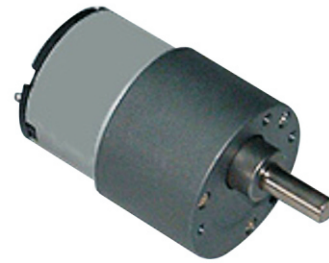


## DS-37RS520 DC SPUR GEAR MOTOR Series

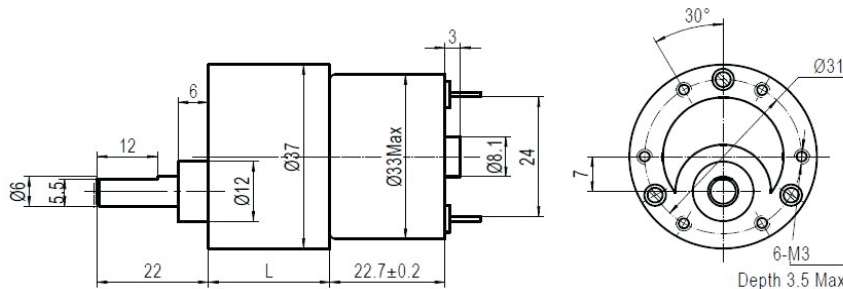
Main voltage:6VDC、12VDC、24VDC

Typical applications:

Auto shutter,Money detector,Binding machine,Automatic TV rack,Packing bank note machine,Limelight,Tissue machine,Office equipment,Household appliances,Automatic Actuator.



### APPEARANCE SIZE



### Gearbox Data:

Number of stages	2、3stages reduction	4、5stages reduction	6、7stages reduction
Reduction ratio	7、10; 21、30	61、90; 121、184、270	552、810; 1656、2443
Gearbox length L mm	18; 21.5	24; 26.5	29; 31.5
Max. Running torque	2Kgf. cm	10Kgf. cm	15Kgf. cm
Max. Gear breaking torque	8Kgf. cm	30Kgf. cm	40Kgf. cm
Max.Gearing efficiency	81%; 73%	65%; 59%	53%; 48%

Other reduction ratio please telephone or e-mail to our engineering department.

### Motor Data:

Motor name	Rated Volt. V	No load		Load torque				Stall torque	
		Current	Speed	Current	Speed	Torque	Output power	Torque	Current
		mA	r/min	mA	r/min	gf·cm	W	gf·cm	mA
RS-520123000	12	≤20	3000	≤110	2200	25	0.55	100	400
RS-520124500	12	≤30	4500	≤150	3300	35	1.2	150	850
RS-520126000	12	≤40	6000	≤400	4500	45	2.3	180	1400
RS-520243000	24	≤15	3000	≤60	2200	25	0.55	100	200
RS-520244500	24	≤20	4500	≤80	3300	35	1.2	140	420
RS-520246000	24	≤30	6000	≤200	4500	45	2.3	180	700

Remarks: After connecting motor and gearbox(named gear motor),the output torque of gear motor=driving motor torque\*gear reduction ration\*gearing efficiency; Output speed of gear motor = Driving motor speed/gear reduction ration.

### NOTE:

1. Gear motor named methods:e.g.DS-37RS520123000-90K,as for Driving Motor, please refer to the motor data of RS-520123000;Gearbox, please refer to gearbox data of reduction ration 211.Related to the gear motor output speed & torque,please refer to the remarks in driving motor data;
2. Motor can be installed with magnetic encoder,for more details,pls refer to our company website;
3. Standard output shaft after reducing:  $\phi$  6.0mm,othersizes of the output shaft can be made as client's request;
4. The gear materials can be plastic,powder metallurgy,or 45# steel after heat-treatment;