



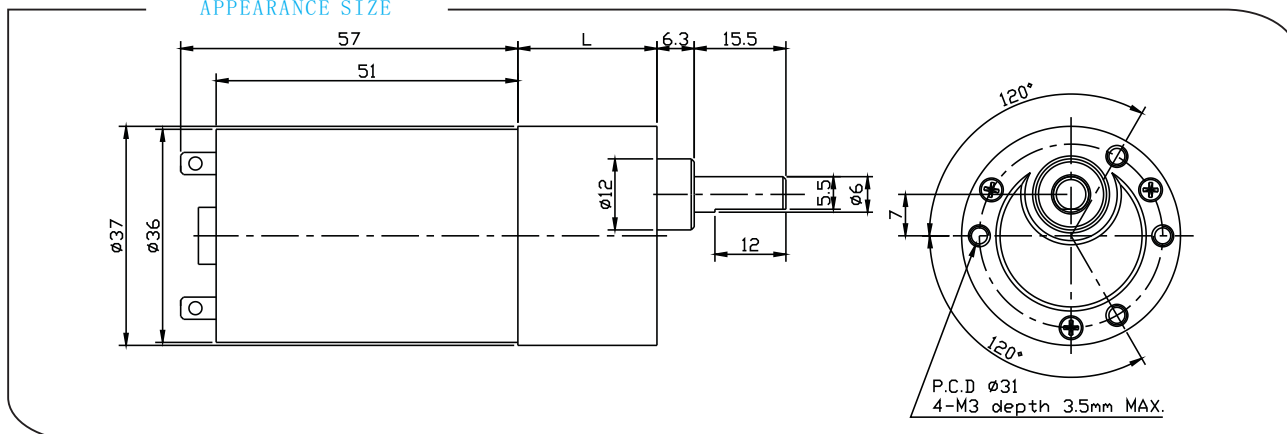
DS-37RS545 DC SPUR GEAR MOTOR Series

Main voltage: 6VDC、12VDC、24VDC

Typical applications:

Auto shutter, Money detector, Binding machine, Automatic TV rack, Packing bank note machine, Towel dispensers, Tissue machine, Office equipment, Household appliances, Automatic actuator.

APPEARANCE SIZE



Gearbox Data:

Number of stages	2、3 stages reduction	4、5 stages reduction	6、7 stages reduction
Reduction ratio	7、10 ; 21、30	61 90; 121、184、270	552、810 ; 1656、2443
Gearbox length "L" mm	19; 22.5	25; 27.5	30; 32.5
Max. Running torque	2Kgf • cm	10Kgf • cm	10Kgf • cm
Max. Gear breaking torque	8Kgf • cm	30Kgf • cm	30Kgf • cm
Max. Gearing efficiency	81%; 73%	65%; 59%	53%; 48%

Other reduction ratio please telephone or e-mail to our engineering department.

Motor Data:

Motor name	Rated Volt. V	No load		Load torque				Stall torque	
		Current	Speed	Current	Speed	Torque	Output power	Torque	Current
		mA	r/min	mA	r/min	gf • cm	W	gf • cm	mA
DS-545123000	12	≤110	3000	≤450	2200	100	2.2	400	1800
DS-545124500	12	≤220	4500	≤800	3300	150	4.9	600	3000
DS-545126000	12	≤350	6000	≤1500	4500	200	9.0	800	5500
DS-545243000	24	≤60	3000	≤230	2200	100	2.2	400	900
DS-545244500	24	≤110	4500	≤400	3300	150	4.9	600	1500
DS-545246000	24	≤150	6000	≤750	4500	200	9.0	800	3000

Remarks: After connecting motor and gearbox(named gear motor),the output torque of gear motor=driving motor torque*gear reduction ration*gearing efficiency; Output speed of gear motor = Driving motor speed/gear reduction ration.

NOTE:

1. Gear motor named methods:e.g.DS-37RS545123000-90K,as for Driving Motor, please refer to the motor data of RS-545123000;Gearbox, please refer to gearbox data of reduction ration 90.Related to the gear motor output speed & torque,please refer to the remarks in driving motor data;
2. Motor can be installed with magnetic encoder,for more details,pls refer to our company website;
3. Standard output shaft after reducing: ϕ 6.0mm,othersizes of the output shaft can be made as client's request;
4. The gear materials can be plastic,powder metallurgy,or 45# steel after heat-treatment;