

DS-60SSJB52 DC GEAR MOTOR Series **DongShun**

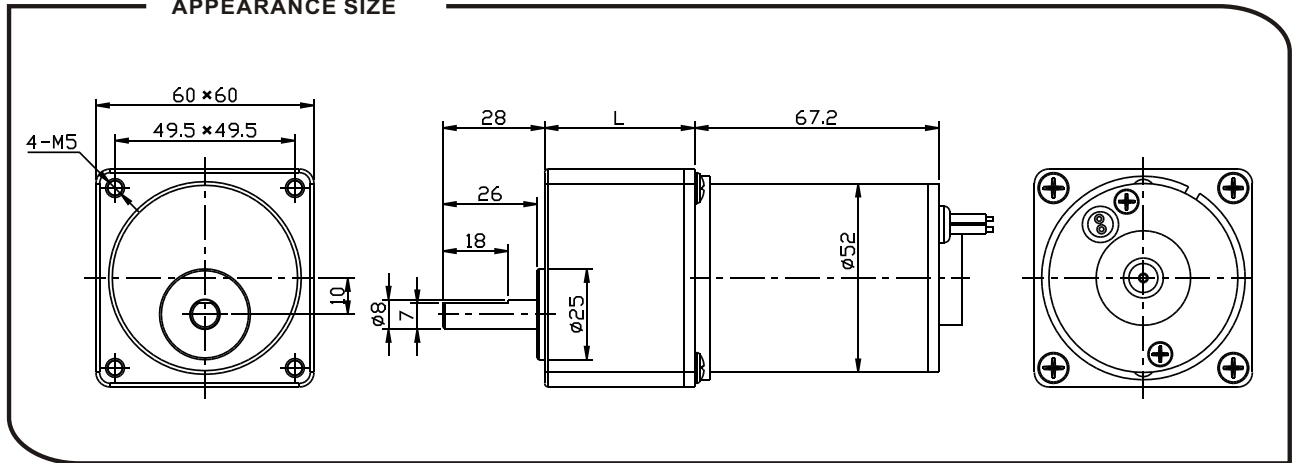
Main voltage: 6VDC、12VDC、24VDC、36VDC

Typical applications: Pan/Tilt camera, Cleaning machine, Garbage disposers, Angular telescope, Automatic doors, Peritoneal machine, Electric advertising, Amusement equipment, Card conveyors, Office equipment, Household appliances, Automatic actuator.

Weight: 400~450g/pcs (approx)

Packing details: CTN size: 35X26XH19cm 10pcs/CTN G.W.12Kgs

APPEARANCE SIZE



Gearbox data:

Number of stages	2、3 stages reduction	4 stages reduction	5stages reduction
Reduction ratio	9.7、10、13、13.5、18.8、19.6、29、30、39、40、56、58	87、90、117、122、169、176	261、272、351、366、507、529
Gearbox length "L" mm	31.3	41.3	41.3
Max. Running torque	10Kgf • cm	50Kgf • cm	50Kgf • cm
Max. Gear breaking torque	30Kgf • cm	150Kgf • cm	150Kgf • cm
Max.Gearing efficiency	81%；73%	65%	59%
Other reduction ratio please telephone or e-mail to our engineering department.			

Motor data:

Motor name	Rated Volt. V	No load		Load torque				Stall torque	
		Current	Speed	Current	Speed	Torque	Output power	Torque	Current
		mA	r/min	mA	r/min	gf • cm	W	gf • cm	A
JB-52121800	12	≤350	1800	≤1000	1300	600	15.0	2400	4.0
JB-52123600	12	≤700	3600	≤4000	2700	1200	32	4800	13
JB-52241800	24	≤200	1800	≤600	1300	600	8.0	2400	2.0
JB-52243600	24	≤400	3600	≤2000	2700	1200	32	4800	7.0

1、 After connecting motor and gearbox which is named gearmotor the output torque: motor torque X reduction ratio X gearing efficiency; output speed: motor speed / reduction ratio.

NOTE:

- 1、 Gearmotor named methods: e.g. DS-60SSJB52121800-90K Motor please refer to the motor data JB-52121800. Gearbox please refer to gearbox data reduction ratio 90. Related to gearmotor output speed and torque please refer to motor data.
- 2、 Gearbox shell material: zinc alloy.
- 3、 Gearbox gear materials: The first stage gear: plastic gear. The final stage gear: 45# steel Heat-treatment gear. Other stages gear: powder metallurgy gear.
- 4、 Standard output shaft after reducing: 1.0mm. other sizes of the output shaft can make as client request.
- 5、 Chart only for reference, products shall prevail the entity.