

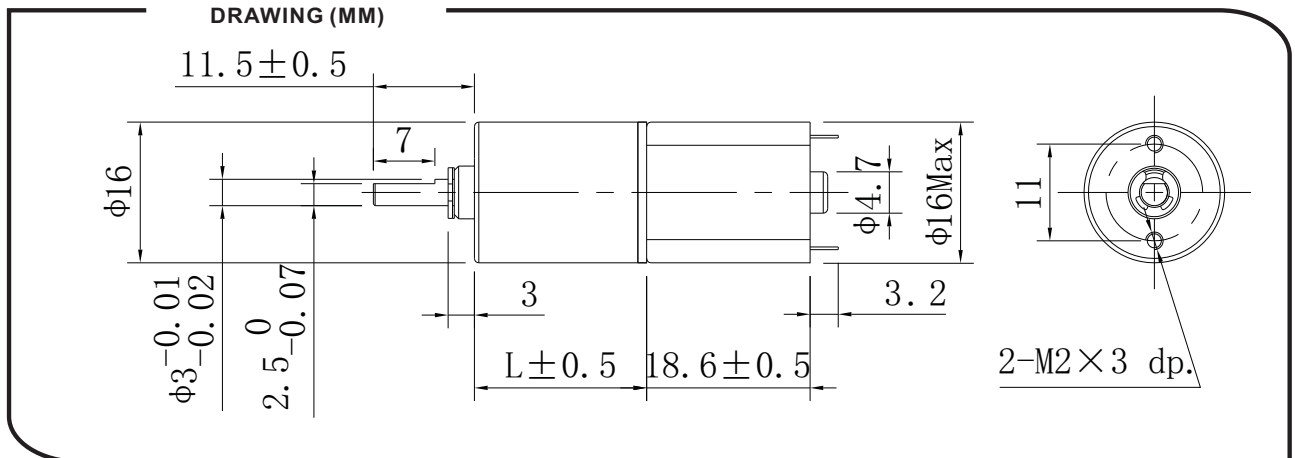


## DS-16RP030 DC PLANETARY GEAR MOTOR

基本电压/Main voltage: 3VDC, 6VDC, 9VDC, 12VDC, 24VDC

### 典型应用/Typical applications:

光学设备、摄像机、电子锁、自动节能浴具、水IC卡、玩具和礼品、办公设备、家用电器、自动执行机构  
Optical equipment, CCTV camera, electric lock, automatic bath necessities, water IC Card, toys and gifts, office equipments, household appliances, automatic actuator



### 齿轮箱参数/Gearbox data:

段数 Number of stage	1	2	3	4	5
减速比 Reduction ratio	4, 4.75	16, 19, 22.5	64, 76, 90, 107	256, 304, 361, 428, 509	1024, 1216, 1444, 1714, 2036, 2418
齿轮箱长度 Gearbox length "L" mm	15.8	15.8	19.4	23	26.6
额定扭矩 Rated torque(Kgf.cm)	0.56	0.84	1.12	1.4	1.68
破坏扭矩 Breaking torque(Kgf.cm)	2.1	3.15	4.2	5.25	6.3
齿轮箱效率 Gearbox efficiency	90%	81%	72%	65%	59%

### 电机参数/Motor data:

电机型号 Motor model	额定电压 Rated Volt.	空载/No load		负载/Load				堵转/Stall	
		电流	转速	电流	转速	扭矩	功率	扭矩	电流
		Current	Speed	Current	Speed	Torque	Power	Torque	Current
	V	mA	r/min	mA	r/min	gf · cm	W	gf · cm	mA
DS-030038000	3	≤55	8000	≤240	6500	4	0.26	16	960
DS-0300610500	6	≤35	10500	≤140	8500	5	0.43	20	560

齿轮箱电机输出扭矩：电机输出扭矩 x 减速比 x 齿轮箱效率；齿轮箱电机输出转速：电机输出转速 / 减速比。

Output torque of gear motor : Output torque of motor x Reduction ratio x Gearbox efficiency;

Output speed of gear motor: Output speed of motor / Reduction ratio.