



DSMOTORS

深圳市东顺电机有限公司

SHENZHEN DONGSHUN MOTOR CO., LTD

产品规格书

MOTOR SPECIFICATION

TEL:0755-27919027 FAX:0755-27914710

Website:Http://www.dongshunmotor.com



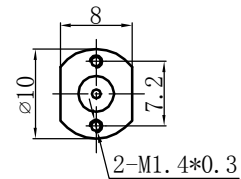
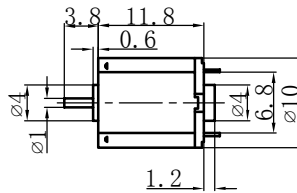
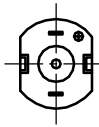
DS-M10VA

OUTPUT: APPROX. 0.02-0.5W

MODEL	VOLTAGE		NO LOAD		AT MAXIMUM EFFICIENCY				STALL	
	OPERATING RANGE (v)	NOMINAL	SPEED r/min	CURRENT A	SPEED r/min	CURRENT A	TORQUE g. cm	OUTPUT W	TORQUE g. cm	CURRENT A
DS-M10VA-06230	2.0-5.0	4.5V	23200	0.065	17500	0.14	1.0	0.20	4.0	0.30
DS-M10VA-09120	1.0-3.0	1.5V	14000	0.12	6000	0.30	1.6	0.08	2.6	0.45

Unit:mm

WEIGHT:3.2g



MODEL: DS-M10VA-06230

VOLTAGE: 4.5V

MODEL: DS-M10VA-09120

VOLTAGE: 1.5V

