



深圳市东顺电机有限公司

SHENZHEN DONGSHUN MOTOR CO., LTD

产品规格书

MOTOR SPECIFICATION

TEL:0755-27919027 FAX:0755-27914710

Website:Http://www.dongshunmotor.com

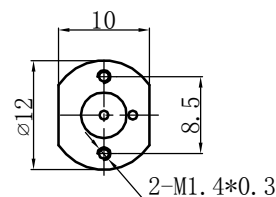
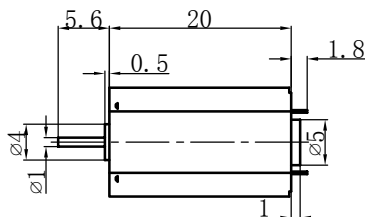
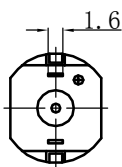


DS-N30VA OUTPUT: APPROX 0.1-0.8W

MODEL	VOLTAGE		NO LOAD		AT MAXIMUM EFFICIENCY				STALL	
	OPERATING RANGE (v)	NOMINAL	SPEED r/min	CURRENT A	SPEED r/min	CURRENT A	TOGQUE g. cm	OUTPUT W	TOGQUE g. cm	CURRENT A
DS-N30VA-09210	2.0-5.0	2.5V	5200	0.019	4040	0.066	1.8	0.075	8	0.23

Unit:mm

WEIGHT:7.5g



MODEL:DS-N30VA-09210

VOLTAGE: 2.5V

